



Trip Report: Sawmill Creek Tributary - Comstock Culvert

Anadromous Stream #: 115-32-10300-2002-3013-4013 **Permit:** SF2023-115

Date: 10/17/2023

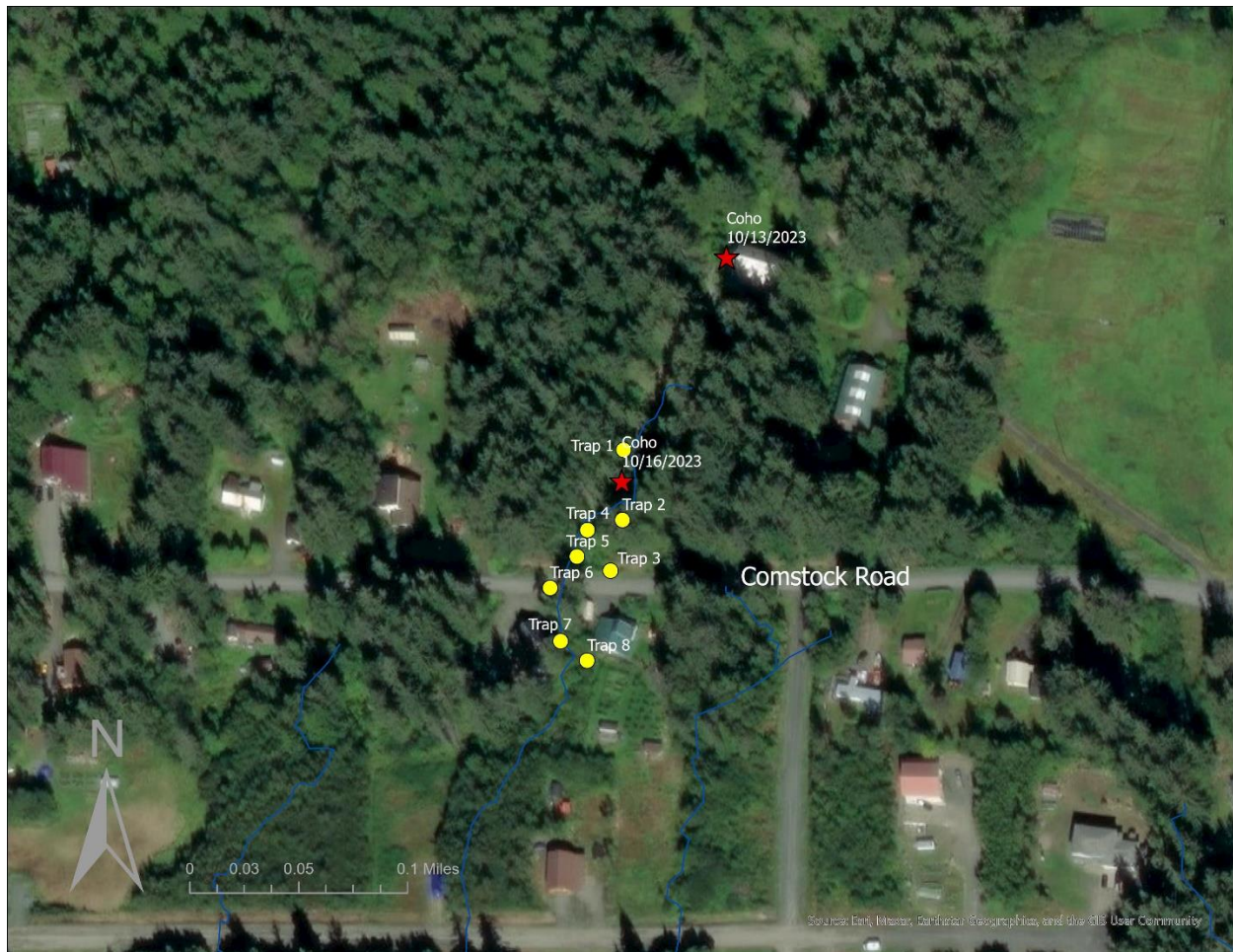
Technicians: Stacie Evans, Jeremy Taylor

Minnow Traps: 8

Trapping Duration: 20hrs

Species and life stage: CTr, COs

Location:



Meridian	Township	Range	Section
Copper River	30 South	59 East	27

Trap Locations					
	Latitude	Longitude		Latitude	Longitude
Trap #1	59.240792	-135.463874	Trap #5	59.24043	-135.464183
Trap #2	59.240554	-135.463882	Trap #6	59.240324	-135.464362
Trap #3	59.240382	-135.46396	Trap #7	59.240143	-135.464292
Trap #4	59.24052	-135.464113	Trap #8	59.240077	-135.464116

Trap Results					
	Species	Fork Length (mm)		Species	Fork Length (mm)
Trap #1	None	-	Trap #5	Cutthroat	150
Trap #2	Cutthroat	130	Trap #5	Cutthroat	135
Trap #2	Cutthroat	90	Trap #5	Cutthroat	115
Trap #2	Cutthroat	75	Trap #5	Cutthroat	125
Trap #3	Cutthroat	125	Trap #5	Cutthroat	85
Trap #3	Cutthroat	80	Trap #6	Cutthroat	105
Trap #3	Cutthroat	105	Trap #6	Cutthroat	75
Trap #3	Cutthroat	100	Trap #7	Cutthroat	95
Trap #4	Cutthroat	75	Trap #8	Cutthroat	125
Trap #5	Cutthroat	110			



Adult coho observed on 10/16/2023 at 59.240685, -135.463885 (above) and on 10/13/2023 at 59.241445, -135.463190 (below).

Notes: A culvert was replaced in this unnamed tributary of Sawmill Creek to improve fish passage in August 2017. Trapping was conducted to monitor efficacy of this restoration project. Traps #1-5 were set upstream of the culvert on 10/16/2023, and traps #6-8 were set downstream. Juvenile cutthroat were captured in all traps except for trap #1. Adult spawning coho were observed upstream of the trapping site on 10/13/2023, and between traps #1 and 2 on 10/16/2023.

Recommendations: Add spawning coho to 115-32-10300-2002-3013-4013 of the Anadromous Waters Catalog with an upstream extent of 59.241445, -135.463190.